

omniClean SERIES hydraOne

elit
electronics

WET-DRY VACUUM CLEANER
INSTRUCTION MANUAL

elit-electronics.com



Please read this user manual carefully to fully understand the usage of this product.
Keep the manual for future reference since it contains important information.

SAFETY INSTRUCTIONS

Please read this manual's contents carefully before operating this product and install the device according to the steps specified in this manual. Please keep this manual properly for reference. If the product is transferred to a third party, please give this manual together with the device. Any operation that failed to follow the instructions in this manual may result in product damage or personal injury. This product is designed for operation and use only in a conventional home rather than an industrial or outdoor environment.

1. This appliance may be used by children 8 years of age and older and by persons with physical, sensory or mental impairments or by inexperienced persons, if they are properly supervised or have been informed about how to use of the product in a safe manner and understand the potential dangers.
2. Children must not play with the appliance. Cleaning and maintenance performed by the user must not be performed by children unless they are older than 8 years of age and under supervision.
3. Children under 8 years of age must be kept away from the appliance and its power cord.
4. Do not touch the plug or any live part of the product with wet hands to avoid the risk of electric shock.
5. Do not use any damaged charger or plug. Please call the service center for repairs or replacement to avoid any risk (repair without permission is prohibited).
6. Make sure that the mains voltage matches the voltage stated on the rating label of the appliance and that the outlet is grounded.
7. Do not use the device if it has been dropped or if there are any visible signs of damage.
8. Do not use any accessory that has not been recommended by the manufacturer, as they might cause injuries or damage.
9. Please use only the charger coming with the device for charging; other types of chargers can cause battery failure or extreme thermal effects.
10. Never modify the charger in any way.
11. Do not use any battery that has not been provided with the original product.
12. Keep airflow channels and moving parts of this product away from long hair, loose clothing, fingers, and other body parts. Do not face the dust suction tube, accessory suction nozzle, or tools toward your eyes or ears or put them in your mouth.
13. During use, if any electric leakage, excessively high temperature, or abnormal sounds (such as body overheating, abnormal sounds, odor, and poor suction) are identified, please stop the device immediately and contact the service center.
14. If this product is out of service for a long time, turn off the power and remove the charger's plug.

15. After using the device, please clean the wastewater tank timely, and keep the suction port and connection pipe unblocked to avoid impaired suction and motor heating due to blockage, affecting the service life of the floor scrubber.
16. Put the device in a dry place for storage before use because the humid environment will affect the insulation performance and service life of the electrical appliances.
17. Do not soak the handle, body, floor brush, and charger of the floor scrubber or wash them directly with water because they contain electrical parts.
18. Please check whether the garbage suction port is functioning regularly without clogs; otherwise, please remove any clog to prevent impaired suction due to solidification and blockage of dirt, thus affecting the cleaning effect of the device.
19. Please make sure that the device is shut down and the screen is turned off before replacing the roller brush.
20. Do not repair the failed device without permission, and please contact the service center for this.
21. When cleaning the vacuum cleaner filter, please remove and wash them with water if recommended by the manufacturer; when you need to use them, please install the dried filter into the vacuum cleaner. Do not use the wet filter, otherwise it may burn out the device due to the short circuit.

About the scope of use of the product

1. This product is suitable for hard floors in indoor environments, including waxed, stone milling, rubber, marble, granite, terrazzo, solid wood, laminate, bamboo, and various flat floors such as mirror tiles and porcelain tiles. The optimal results may not be achieved if this product works on uneven floors.
2. Do not operate this product near or on the surface of flammable and explosive objects; otherwise, there is a risk of fire or explosion.
3. Do not operate this product nearby the working fireplace and heater to prevent the deformation of the device shell.
4. Do not suck high-temperature substances (unextinguished cigarette butts, matches, or hot ash), ultra-fine substances (such as lime, cement, wood chips, gypsum powder, ash, and charcoal powder), dangerous goods (such as solvents and detergent), chemical substances (such as acidic compounds and detergents), and other substances with uncertain physical properties.
5. Do not use this floor scrubber to suck non-designated detergents, kerosene, gasoline, alcohol, paint, and perfume; otherwise, those liquids may cause short circuits, fire, or explosion of the device.
6. Do not use this floor scrubber to suck the toner used in the laser printer and copier because those objects may cause a fire or an explosion.
7. Do not use this floor scrubber to suck sharp objects, such as glass fragments, small toys, pins, clips, stones, plaster, and large pieces of paper because those objects may cause blockage and damage to the device.

8. Stains with strong grease/viscosity/staining effects, such as shoe polish, paint, and pigment, are not within the application scope of this product.

About the filling and use of cleaning solutions

1. If a large amount of cleaning solution is filled, more foam will occur during operation and may penetrate the motor, causing danger.
2. Do not add substances that contain acids or alkaline solutions or that are harmful to the environment.

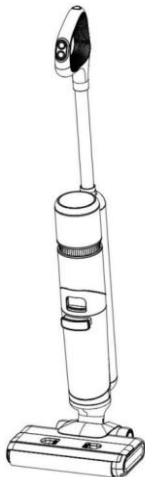
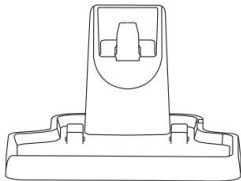



About device

1. Do not disassemble and assemble this floor scrubber without permission. No part of this device can be maintained by customers themselves. Do not try to change the performance of the device; otherwise, it can cause danger.
2. The use of a charger inconsistent with the specifications of this product will cause damage to the battery and may even cause injury to the user.
3. The correct rated voltage is marked on the nameplate located on the back of the body.
4. When there is a large amount of liquid in the wastewater tank, do not shake the device up and down, violently impact it, or pour the liquid on the ground to prevent wastewater from flowing into the motor or entering the internal live part along the gap.
5. When cleaning the stairs with this product, be very careful to prevent it from falling.
6. During the operation of the floor scrubber, do not lift or handle it up and down. Before doing so, please suspend or stop the device.
7. To prevent a person or device from tripping, please put the device against the wall after use.
8. Do not use the clean-water and wastewater tanks if installed incorrectly.
9. Do not put any small objects in the air outlet, do not block the air outlet, and remove all small objects that may hinder the smooth flow of the air outlet to prevent the device from overheating.
10. Wetting the device body is prohibited; otherwise, it may cause fire or electric shock accidents due to a short circuit of the device.
11. Safe disposal method of obsolete battery:
 - If the battery installed in the appliance contains materials harmful to the environment, the battery must be removed from the appliance before disposal of the device.
 - Please power off the appliance before the removal of the battery.
 - Please dispose of the obsolete battery safely and properly, and do not put them into the fire, water, or soil.
 - If the skin or clothing contacts the liquid leaking from the obsolete battery, rinse it with clean water to avoid skin discomfort and seek medical care at a hospital promptly.

BATTERY INSTRUCTIONS

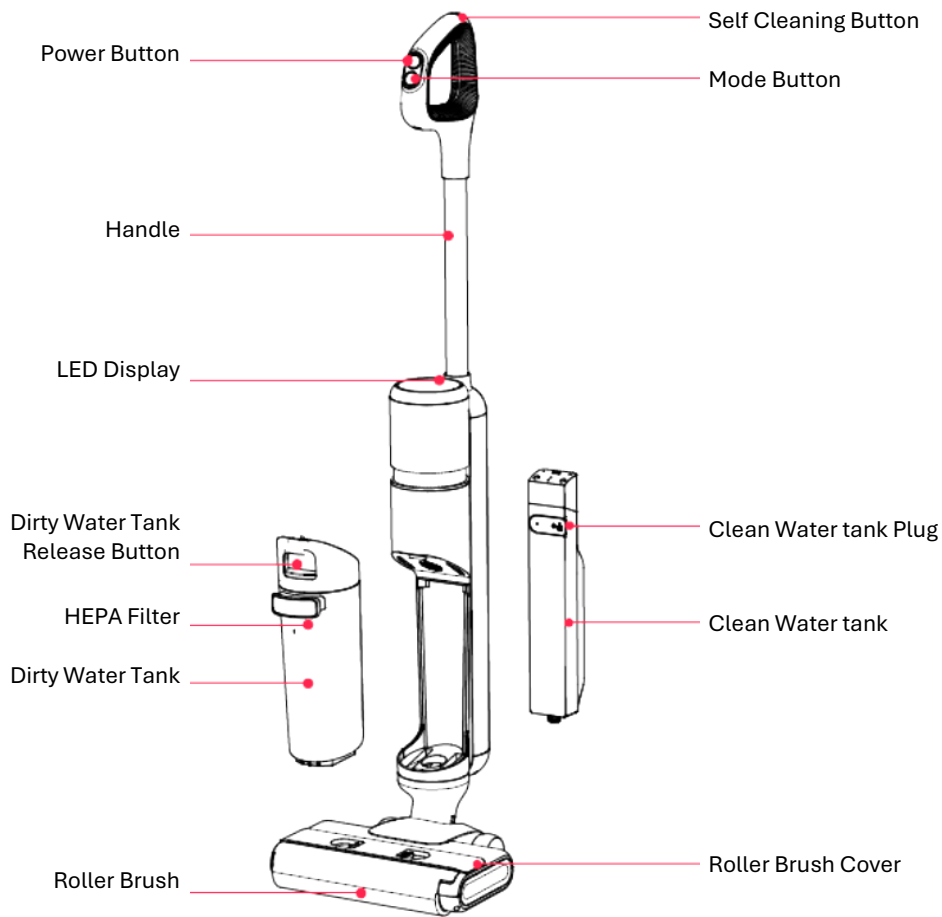
- This appliance includes Li-ion batteries, do not incinerate or expose them to high temperature, as they may explode. ⚠ ⚠
- Leaks from the battery or battery cells can occur under extreme conditions. Do not touch any liquid that leaks from the battery. If the liquid gets into contact with skin, wash immediately with soap and water. If the liquid gets into the eyes, flush them immediately with clean water for a minimum of 10 minutes and seek medical attention. Wear gloves to handle the battery and dispose of immediately in accordance with local regulations. ⚠
- Avoid contact between the battery and small metallic objects such as paper clips, coins, keys, nails or screws.
- Before a new battery is used or the battery is used for the first time after long-term storage, fully charge the battery. When the device is stored and not used for long periods of time, ensure that the battery pack is fully charged and ensure that the battery is charged and discharged at least once every three months.

PACKAGE CONTENT

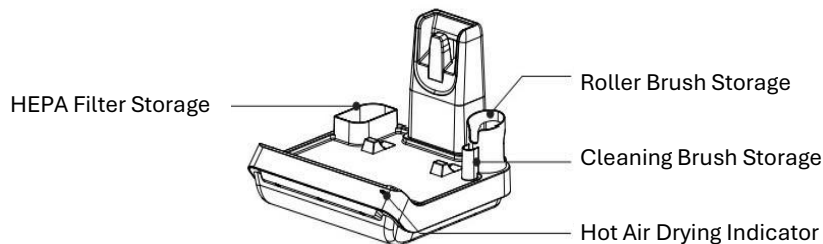
	 Charging base	 Adapter
Main device	 HEPA filter	 Cleaning brush

Note: The illustrations of the product, accessories and user interface in the manual are schematic and are for reference only. The actual product will prevail as the products are improved continuously, and our company reserves the right to update the product.

PRODUCT OVERVIEW

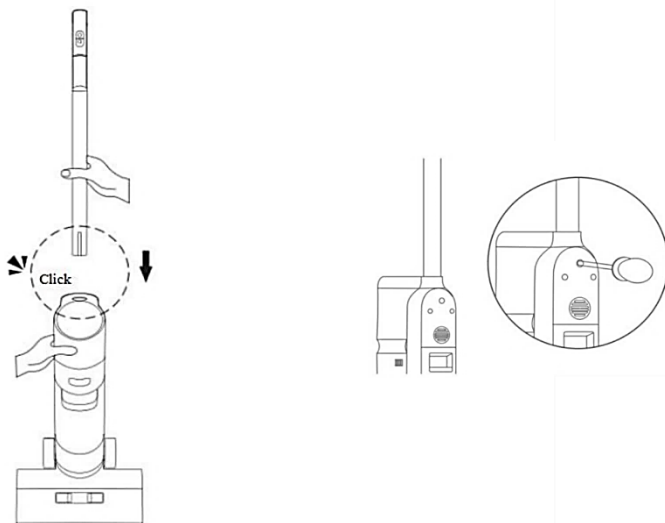


CHARGING BASE WITH HOT AIR DRY

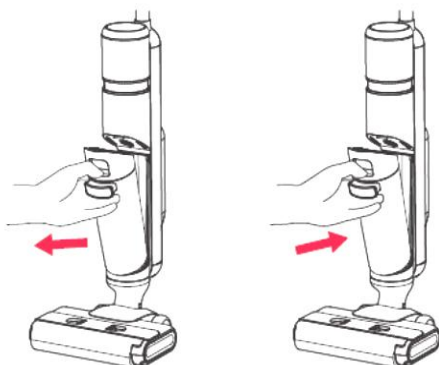


ASSEMBLY AND DISASSEMBLY INSTRUCTIONS OF THE MAIN UNIT

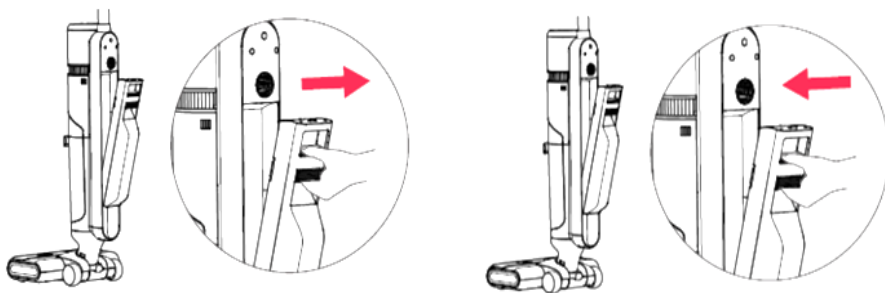
- Insert the end of the handle vertically into the port on the host until a “click” sound is heard, and make sure that the handle is tightly inserted, indicating that it is installed successfully.
- For removal, insert a long, thin, and rigid object into the hole in the back of the body to press the elastic sheet while pulling the machine handle upwards.



- Hold the handle of the dirty water tank, press the dirty water tank release button, and pull the dirty water tank outward to remove it.
- First put the bottom of the dirty water tank into the opening support position in front of the cleaner body, gently push the dirty water tank, and dirty water tank is installed when you hear a clicking sound.



- Hold the cleaner body with one hand and push the clean water tank button with the other hand and then pull the clean water tank outward to take out it.
- First put the bottom of the clean water tank into the opening position on the back of the cleaner body, gently push the clean water tank, and the clean water tank is installed when you hear a clicking sound.



ASSEMBLY AND DISASSEMBLY INSTRUCTIONS OF THE ROLLER BRUSH

- Press the button and pull the roller brush cover upwards to remove it.
- Align the roller brush cover with the floor brush, press it down, and the roller brush cover is installed when a clicking sound is heard.



- Grasp the side handle of the roller brush, pull it outward and remove the roller brush.
- Align the right end of the roller brush cover with the right end of the floor brush, push it to the right, and insert the left handle into the corresponding position. Now, the roller brush is installed.

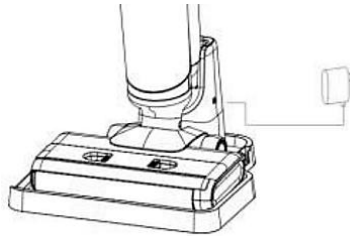


INSTRUCTIONS FOR USE

CHARGING THE BATTERY

Before use, please check whether your floor scrubber battery has power.

- Generally, 10-15% of the battery capacity is reserved when the product leaves the factory. It is recommended to fully charge the product when using it for the first time to ensure the effect and duration of use.
- Place the device into the charging base, connect one end of the charger to the power socket of the base accessory, and connect the other end to the socket in the wall. The power indicator flashes during charging.
- After the charging is completed, the power indicator is always on and will go out after 5 minutes.
- During the charging process, the device screen displays the power status in real time, and the screen light goes out when the device is fully charged.
- The power cord is taken away for storage when device charging is not required.

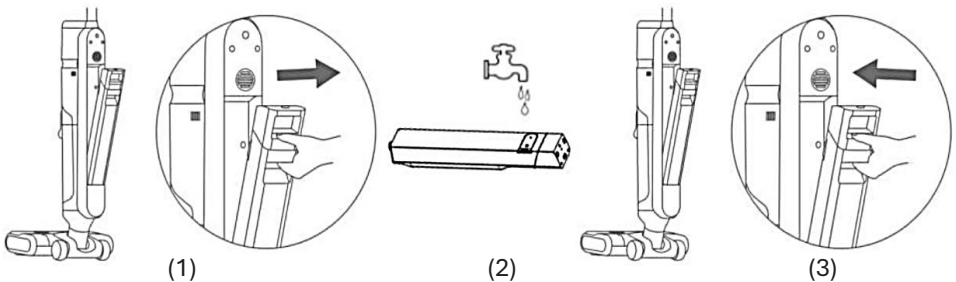


REMINDER:

Please charge the product once every three months if it is out of service for a long time after purchase. Please be sure to use the charging base equipped with the product for charging. The charging time is about 4 hours.

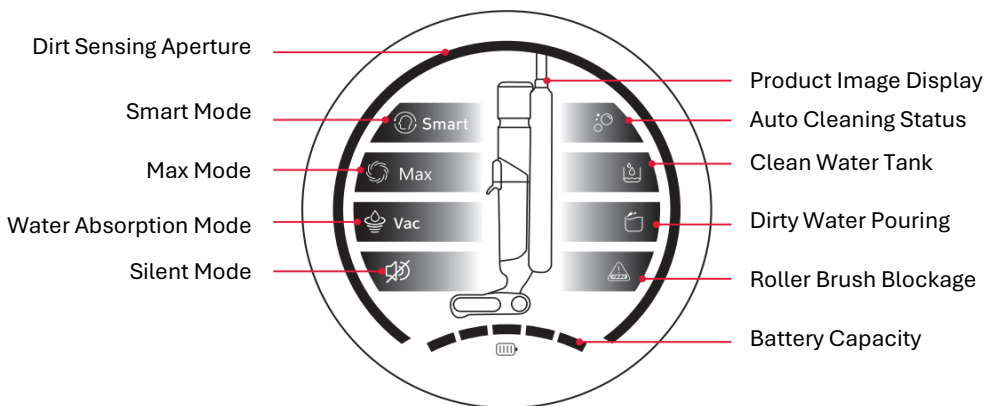
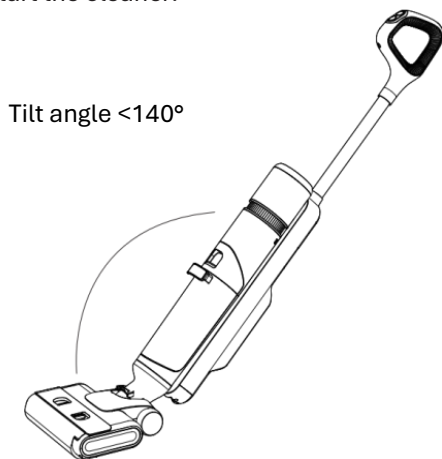
FILL WATER IN THE CLEAN WATER TANK

- (1) Disassemble the Clean water tank
- (2) Disassemble the silicone plug and fill the tank with water
- (3) Install clean water tank on the body



START TO WORK

The cleaner is equipped with a vertical ON button. Please tilt the cleaner for use after startup. Do not tilt it more than 140° to avoid leakage of the wastewater tank. Tilt the main unit and start the cleaner.



1. **Startup:** Press the **Power** button after the product is fully charged to start the machine and press this button again to shut down the machine.
2. **Mode switching:** Press the **Mode** key to activate the **AUTO** (auto) mode by default after startup. Press the **Mode** key to switch to the **MAX** (powerful) mode. The two modes alternate in turn
 - **AUTO (auto) mode:** The cleaning power is automatically adjusted according to the degree of fouling on the ground, and this mode is suitable for daily floor cleaning and maintenance at home.

- **MAX (powerful) mode:** This function can be used for stubborn stains or those that cannot be removed easily or quickly from the floor.
 - **VAC suction mode:** With no water supplied from the water pump, conduct the dry suction/mop cleaning on the floor, suitable for removal of massive water strain and dry mopping.
3. **Self-cleaning:** When the host is charging on the charging base, press the self-cleaning function button to activate the self-cleaning function of the machine. Deactivate this self-cleaning function by pressing this button again.
4. **Voice on/off:** The cleaner must be on the upright standby before the voice can be turned off or on. The default setting of the device comes with the voice function on, press the self-clean button and hold for 3 seconds, to turn the voice function off or on.

OPERATING INSTRUCTIONS

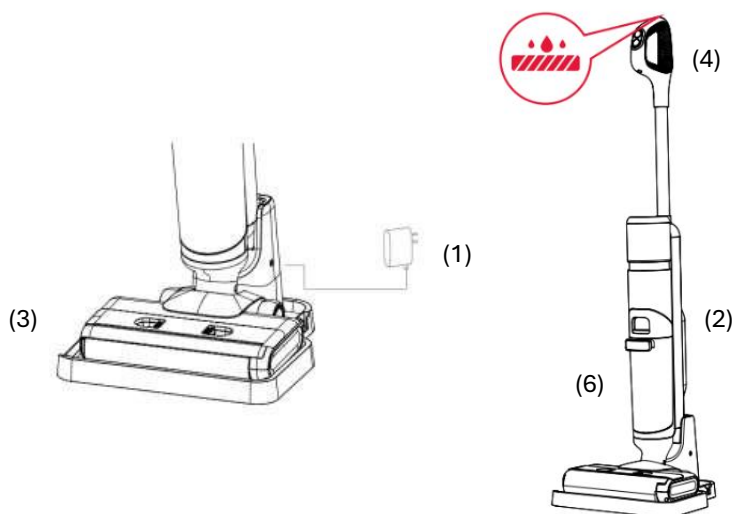
Description	Operating Instructions
On/off Button	Press the on/off button to turn the cleaner on/off.
Smart Mode	After startup, the cleaner is in Smart mode and automatically senses the dirt on the ground and automatically adjusts the suction according to the dirt degree. The mode is suitable for daily cleaning in the home.
Max Mode	Press the gear switch button and switch mode to the MAX mode. The mode is suitable for removing stubborn stains and water accumulation.
Water Absorption Mode	This mode only absorbs water and is suitable for bathrooms to absorb excess water.
Auto Cleaning	In the charging state, press the Auto Cleaning button, and the cleaner will automatically clean the roller brush and pipeline.
Low Battery Reminder	If the battery capacity is less than 20%, the red aperture light above the "battery capacity" of the battery pack will flash. It is recommended to put the cleaner back into the charging dock for charging.
Dirty Water Pouring Reminder	If the dirty water tank is full of dirty water, the dirty water tank indicator light of the cleaner will flash, and the cleaner will automatically shut down. Please pour the dirty water, reinstall the dirty water tank onto the cleaner, and then start the cleaner.

Water Adding Reminder	<p>If the water in the clear water tank is used up, the clean water tank indicator light of the cleaner will flash. Please shut down the cleaner and take down the clear water tank to add clear water. Reinstall the clear water tank onto the cleaner before starting the cleaner.</p>
Roller Brush Cleaning Reminder	<p>If the roller brush is wounded by hair and other objects, the floor brush indicator light of the cleaner will flash, and the cleaner will automatically shut down. Please remove the roller brush and clean it. Then reinstall the roller brush and the roller brush cover before starting the cleaner.</p>

CLEANING AND MAINTANANCE

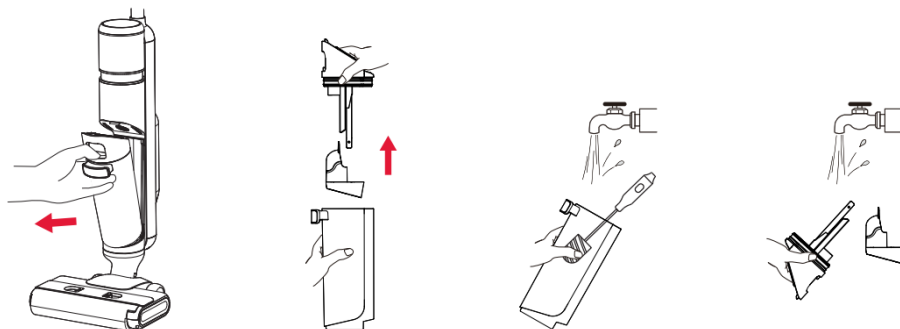
SELF-CLEANING (CLEANING AFTER USE)

1. Plug in the power and switch it on to enter standby mode.
2. Make sure that the volume of the clean water tank exceeds the auto cleaning minimum water level, and the dirty water tank has no dirty water.
3. Place the appliance on the **Hot Air Drying Station** and commence charging.
4. Press the **Self-Cleaning Button** to initiate the self-cleaning process.
5. After the completion of the self-cleaning process, the Hot Air Drying Station will automatically activate the hot air drying function. The hot air drying process lasts 2-3 hours, the brush is rotated every 10 seconds to dry evenly.
6. Please remove the solid and liquid garbage in the dirty water tank timely and remove the residual stains on the Hot Air Drying Station if found.



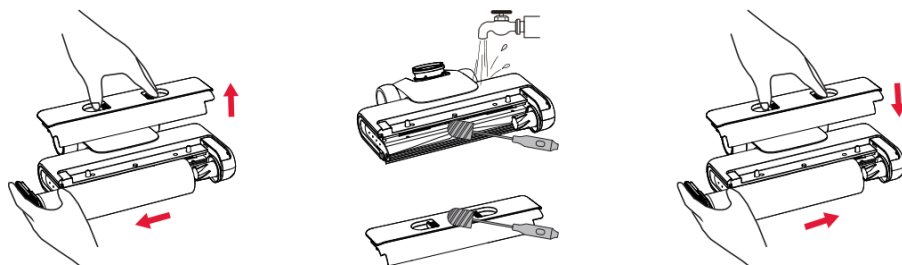
CLEAN THE DIRTY WATER TANK

1. When the dirty water tank is full or the machine is shut down, remove the dirty water tank.
2. Remove the dirty water from the dirty water tank and wash the dirty water tank with clean water.
3. Wash the dirty water tank cover, HEPA and solid-liquid separator.
4. After the dirty water tank cover and the HEPA are dried, assemble them and put them back into the machine.



CLEAN THE FLOOR BRUSH AND THE ROLLER BRUSH COVER

1. Clean the suction port of the floor brush with a cleaning brush.
2. Clean the roller brush cover with a cleaning brush.
3. After cleaning, reinstall the roller brush and its cover on to the machine.



TIPS FOR USE

1. To prevent affecting the working performance of the cleaner, it is recommended to regularly clean and maintain the main body, floor brush, dirt suction port and dirty water tank.
2. Before cleaning, stop the machine and turn off the screen lights, wipe the machine body with a cloth dipping in water or neutral detergent, and wring out the cloth to avoid water stains penetrating the inside of the machine.
3. Wastewater tank cleaning: After each use, please clean the wastewater tank in time (with a cleaning brush), clean the upper cover, and filter of the wastewater tank regularly.

TROUBLESHOOTING

Switch off the appliance and disconnect the mains plug before addressing any faults! Failure to do so may result in injury or electric shock.

Problem	Possible cause	Solution
Poor running of roller brush	The roller brush is blocked	Please clean the roller brush
	The roller brush is worn	Please contact the authorized service center to replace the roller brush
	The drive belt is worn	Please contact the authorized service center to replace the drive belt
Abnormal operation of the vacuum cleaner	The roller brush, roller brush cover and dirty water tank are not installed in place	Please reinstall them
	The suction port or pipe is blocked	Please clean the suction port or pipe
	The dirty water tank has the specified capacity	Please take out the dirty water tank to pour out dirty water
	The filter port above the dirty water sensor is dirty	Please clean the filter port
	The HEPA filter is dirty or missing	Please clean or install the HEPA filter
	The roller brush is entangled by objects such as hair	Please clean the roller brush
Abnormal noise when the cleaner is running	The dirty water tank has the specified capacity	Please take out the dirty water tank to pour out dirty water
	The suction port is blocked	Please clean the suction port
	The floor brush is not installed in place	Please reinstall the floor brush
No water comes out when the cleaner is working	Water shortage in the clean water tank	Add water to the clean water tank
	The clean water tank is not installed in place	Please reinstall it

The roller brush automatically stops working	The floor brush protection device is running	Please check whether there is any foreign matter hindering the operation of the roller brush. Remove the foreign matter and reinstall it before use
Air outlet leakage	The HEPA filter is not dried after cleaning	Please dry the HEPA filter
	The HEPA filter is not installed	Please install the HEPA filter
Water leakage at the bottom of the roller brush	The dirty water tank or HEPA filter is not installed	Please install the dirty water tank or HEPA filter
	The water pump is damaged	Please contact the authorized service center to replace the water pump
Auto cleaning fails to start	The cleaner is not correctly placed in the charging dock	Please correctly place the cleaner to the charging dock and correctly connect the adapter
Clean water tank leakage	The clean water tank is damaged	Please contact the authorized service center to replace the clean water tank
No voice function	The voice function is turned off	Press and hold the gear switch key for 3 seconds in the Power On state
	The horn is damaged	Please contact the authorized service center to repair the horn
The display is not lit and there is no display	The display is damaged	Please contact the authorized service center to repair the display

SPECIFICATION

Product:	Smart Wet & Dry Vacuum Cleaner
Model:	hydraOne
Power:	230W BLDC
Battery:	28.8V 2600 mAh
Adapter Input/Output:	100-240 V~50/60Hz / 35V 500mA
Maximum suction power:	37W
Maximum vacuum power:	13Kpa
Clean water tank capacity:	0.4L
Wastewater tank capacity:	0.8L
Product dimensions:	1100x275x220mm

INSTRUCTIONS AND INFORMATION REGARDING THE DISPOSAL OF USED PACKAGING MATERIALS

Take the packaging material to a designated municipal waste facility.

DISPOSAL OF USED ELECTRICAL AND ELECTRONIC EQUIPMENT



This symbol on the products or accompanying documents indicates that used electrical and electronic products should not be disposed of with regular municipal waste. For proper disposal and recycling, take these products to designated collection points. Alternatively, in some European Union states or other European countries you may return your appliances to the local retailer when buying an equivalent new appliance. Correct disposal of this product helps save valuable natural resources and prevents damage to the environment

caused by improper waste disposal. Ask your local authorities or collection facility for more details. In accordance with national regulations penalties may be imposed for the incorrect disposal of this type of waste.

Disposal in Other Countries Outside the European Union

This symbol is valid in the European Union. If you wish to dispose of this product, please consult your local authorities or your dealer for information on the correct method of disposal.



This appliance complies with EU rules and regulations regarding electromagnetic and electrical safety.

The text, design and technical specifications may be changed without prior notice and we reserve the right to make these changes.

